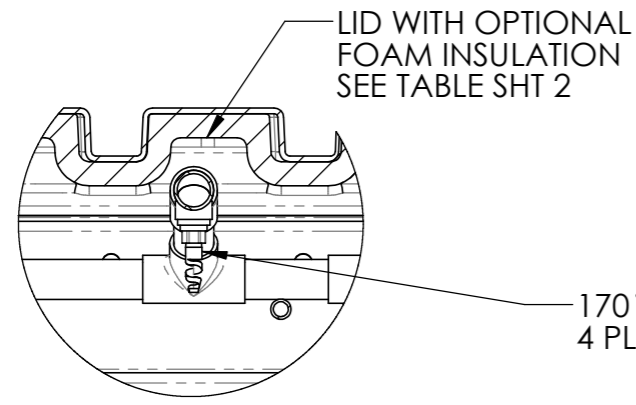


ISOMETRIC VIEW



DETAIL B  
SCALE 1 : 8

INLET PIPE  
PRESSURE MANIFOLD

SUPPORT BARS  
FOR MODULE AND  
MANIFOLD  
3 PLACES

SECTION A-A

80/20 DIVIDING WALL  
SEALED AROUND EDGE  
WITH FOAM

20% TREATED GRAVITY  
OUTLET W/ EITHER  
-  $\phi$  1.5" SOCKET OUTLET  
W/ SCREEN  
- 7/8" WEEP HOLES  
FOR DIRECT DIFFUSION  
TO SUBSTRATE  
SEE TABLE SHT 2 FOR PN

170° SPRAY NOZZLE  
4 PLACES

SCHRAEDER VALVE  
FOR INLET PRESSURE VERIFICATION

$\phi$  2" GRAVITY 80% RECIRCULATION PIPING.  
 $\phi$  1" THREADED OUTLET TO  $\phi$  1.5" SCH 40 PIPE,  
TEE'D INTO MAIN  $\phi$  2" RECIRC LINE.  
TO BE TERMINATED AS NEEDED FOR SYSTEM DESIGN.  
2 OUTLETS EACH SIDE CAN BE PLUMBED  
IN MULTIPLE CONFIGURATIONS  
TO MEET SYSTEM DESIGN REQUIREMENTS.

LID REMOVED FOR CLARITY

HOLES FOR LIFTING ROPES.  
ROPES NOT SHOWN,  
4 PLACES EACH SIDE

LID VENT HOLES

GRADE

$\phi$  1.0" PRESSURE INLET

GENERAL NOTES:

1. THIS DRAWING IS FOR REVIEW PURPOSES ONLY. DO NOT USE FOR PRODUCTION.
2. ALL FIELD DIMENSIONING IS TO BE PERFORMED BY OTHERS. ALL DIMENSIONS SHALL BE PROVIDED PRIOR TO ANY FABRICATION.
3. ANY MODIFICATIONS TO EXISTING SITE ITEMS ARE BY OTHERS.
4. SUBMITTAL DRAWINGS ARE BASED ON CONTRACT DRAWINGS AND SPECIFICATIONS. IT IS THE RESPONSIBILITY OF THE CONTRACTOR TO VERIFY ALL APPROVED DRAWINGS BEFORE FABRICATION AGAINST EACH OTHER AND FIELD CONSTRAINTS. ANUA WILL NOT BE RESPONSIBLE FOR ANY EQUIPMENT FABRICATED THAT REQUIRES FIELD MODIFICATION IF BUILT IN ACCORDANCE WITH ANY APPROVED AND VERIFIED DRAWINGS.
5. PURCHASED PARTS CARRY THE WARRANTY OF THE ORIGINAL MANUFACTURER ONLY.
6. MAKE NO REPAIRS OR MODIFICATIONS WITHOUT CONTACTING YOUR SERVICE REPRESENTATIVE. WARRANTY MAY BE VOIDED.

Legend:

	Valve Unspecified		Globe Valve
	Ball Valve		Ball Valve NC
	Knife Valve NC		Butterfly Valve
	Knife Valve NO		Regulating Valve
	Needle Valve		Diaphragm Valve
	Normal Open		Parallel slide Valve
	Check Valve		Normal Close
	Manual Air Damper		Solenoid
	Fan		Flexible Connection
	Motor		Fan
	Pump		Immersion Heater
	Pressure Indicator		Flowmeter
	Differential pressure switch		Ultrasonic Sensor
	Pressure Transducer		Float Switch
	Temperature Indicator		Y Strainer
	Temperature Transducer		Customer Connection
	Water Line		Electric Line

B	<input type="checkbox"/> PLANNING	<input type="checkbox"/> FOR APPROVAL	06/15/22
	<input type="checkbox"/> TENDER	<input type="checkbox"/> FOR CONSTRUCTION	
<input type="checkbox"/> AS BUILT			

Rev.	Status	DATE
------	--------	------

4106 Bernau Avenue - Greensboro, NC 27407  
Phone 336-547-9338  
www.anuainternational.com

Project  
Client

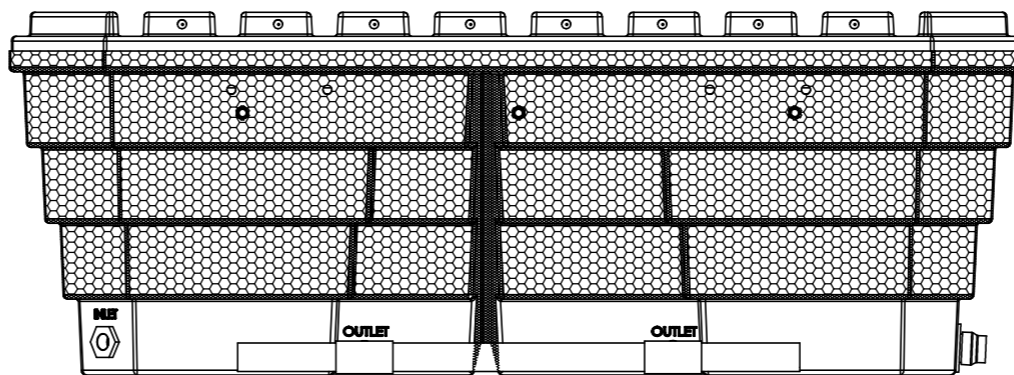
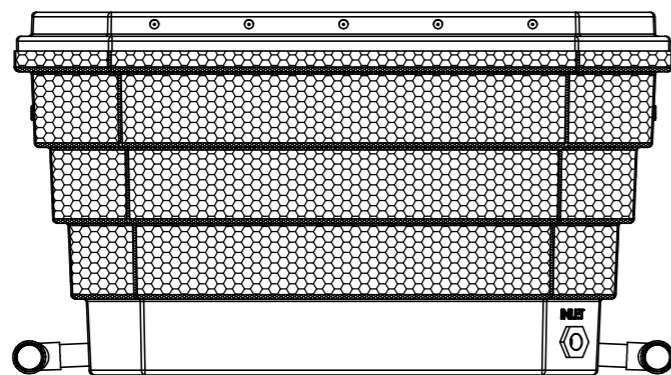
Drawing Title  
**400GPD AC/BC W/ 80/20 SPLIT  
IN ANUA HOUSING**

Sheet 1 of 2	Scale (A0)	Drawn by ADAM L	Checked by	Approved by
-----------------	------------	--------------------	------------	-------------

Dwg. No.  
**Q-ATS-A400-80/20-XC**

REVISIONS			
B	ADDED SCHRAEDER VALVE TO INLET MANIFOLD; ADDED SHEET 2 AND ADDITIONAL PART NUMBERS	06/15/22	ADAM L

Copyright Anua International Llc, Greensboro, NC. All rights reserved. No part of this drawing may be reproduced, stored in a retrieval system, or transmitted in any form or by any means, electronic, mechanical, photocopying, recording, or by any information storage and retrieval system, without the prior written consent of Anua International Llc. All dimensions are in inches unless otherwise noted. Anua International Llc, and may be protected by court proceedings for damages and/or injunctions and costs.



### POD BASE INSULATION ILLUSTRATION (AS APPLICABLE)

SHADED AREAS COVERED IN  
SPRAY FOAM INSULATION

PN	MEDIA	LID INSULATION	BASE INSULATION	20% OUTLET
Q-ATS-A400-WNI-80/20-BC	BIOCOIR	-	-	Ø 1.5" SCH 40
Q-ATS-A400-WI-80/20-BC		X	-	
Q-ATS-A400-WI-80/20-BC-AK		X	X	
Q-ATS-A400-GI-80/20-BC		X	-	WEEP HOLES
Q-ATS-A400-GNI-80/20-BC	AEROCELL	-	-	Ø 1.5" SCH 40
Q-ATS-A400-WNI-80/20-AC		X	-	
Q-ATS-A400-WI-80/20-AC		X	X	
Q-ATS-A400-WI-80/20-AC-AK		X	-	
Q-ATS-A400-GI-80/20-AC		X	-	WEEP HOLES
Q-ATS-A400-GNI-80/20-AC		-	-	

#### GENERAL NOTES:

- THIS DRAWING IS FOR REVIEW PURPOSES ONLY. DO NOT USE FOR PRODUCTION.
- ALL FIELD DIMENSIONING IS TO BE PERFORMED BY OTHERS. ALL DIMENSIONS SHALL BE PROVIDED PRIOR TO ANY FABRICATION.
- ANY VERIFY NOTES OR UNANSWERED CLOUDED ITEMS NOT RESPONDED TO ON THE RETURNED PRINTS WILL BE TAKEN AS APPROVED AND/OR WILL CAUSE DELAYS IN PRODUCTION WITHOUT ANY CONSEQUENCES TO ANUA.
- ANY MODIFICATIONS TO EXISTING SITE ITEMS ARE BY OTHERS.
- SUBMITTAL DRAWINGS ARE BASED ON CONTRACT DRAWINGS AND SPECIFICATIONS. IT IS THE RESPONSIBILITY OF THE CONTRACTOR TO VERIFY ALL APPROVED DRAWINGS BEFORE FABRICATION AGAINST EACH OTHER AND FIELD CONSTRAINTS. ANUA WILL NOT BE RESPONSIBLE FOR ANY EQUIPMENT FABRICATED THAT REQUIRES FIELD MODIFICATION IF BUILT IN ACCORDANCE WITH ANY APPROVED AND VERIFIED DRAWINGS.
- PURCHASED PARTS CARRY THE WARRANTY OF THE ORIGINAL MANUFACTURER ONLY.
- MAKE NO REPAIRS OR MODIFICATIONS WITHOUT CONTACTING YOUR SERVICE REPRESENTATIVE. WARRANTY MAY BE VOIDED.

#### Legend:

	Valve Unspecified		Globe Valve
	Ball Valve		Ball Valve NC
	Knife Valve NC		Butterfly Valve
	Knife Valve NO		Regulating Valve
	Needle Valve		Diaphragm Valve
	Normal Open		Parallel slide Valve
	Check Valve		Normal Close
	Manual Air Damper		Solenoid
	Fan		Flexible Connection
	Motor		Fan
	Pump		Immersion Heater
	Pressure Indicator		Flowmeter
	Differential Pressure		Ultrasonic Sensor
	Pressure Transducer		Float Switch
	Temperature Indicator		Y Strainer
	Temperature Transducer		Customer Connection
	Water Line		Cabinet Heater
			Electric Line

B	<input type="checkbox"/> PLANNING	<input type="checkbox"/> FOR APPROVAL	06/15/22
	<input type="checkbox"/> TENDER	<input type="checkbox"/> FOR CONSTRUCTION <input type="checkbox"/> AS BUILT	
Rev	Status	DATE	

4106 Bernau Avenue - Greensboro, NC 27407  
Phone 336-547-9338  
www.anuainternational.com

Project  
Client

Drawing Title  
**400GPD AC/BC W/ 80/20 SPLIT  
IN ANUA HOUSING**

Sheet 2 of 2	Scale (A0)	Drawn by ADAM L	Checked by	Approved by
-----------------	------------	--------------------	------------	-------------

Dwg. No.  
Q-ATS-A400-80/20-XC